

# Museums

**CIVIC MUSEUM OF ANTIQUE ART  
IN PALAZZO COMUNALE  
GIOVANNI MICHELUCCI  
DOCUMENTATION CENTER**  
Piazza Duomo 1 - Tel 0573 371296  
museocivico@comune.pistoia.it  
musei.comune.pistoia.it

**MUSEUM OF THE SPEDALE DEL CEPPO**  
Piazza Giovanni XXIII - Tel 0573 371023  
museocivico@comune.pistoia.it  
musei.comune.pistoia.it

**ANCIENT PALACE OF THE BISHOPS  
Fondazione Pistoia Musei**  
Piazza Duomo 3 - Tel 0573 28782  
anticopalazzodeivescovi@  
pistoiamusei.it  
www.fondazionepistoiamusei.it

**SAN SALVATORE  
Fondazione Pistoia Musei**  
Via Tomba di Catilina  
info@pistoiamusei.it  
www.fondazionepistoiamusei.it

**ROSPIGLIOSI MUSEUM  
DIOCESAN MUSEUM**  
Palazzo Rospigliosi  
Ripa del Sale 3 - Tel 0573 28740  
museodiocesano@diocesipistoia.it  
www.diocesipistoia.it/musei

**MUSEUM OF EMBROIDERY**  
Palazzo Rospigliosi  
Ripa del Sale 3 - Tel 0573 358016  
www.diocesipistoia.it/musei

**LUIGI TRONCI FOUNDATION  
MUSEUM OF MUSIC AND PERCUSSION  
MUSICAL INSTRUMENTS**  
Corso Gramsci 37  
Tel 0573 994350 / 335 443762  
Visit by reservation  
info@fondazione.luigitronci.org  
www.fondazione.luigitronci.org

**TOURIST INFORMATION OFFICE**  
Piazza Duomo 1  
Tel 0573 21622 - 0573 371274  
turismo.pistoia@comune.pistoia.it

www.visitpistoia.eu

Cover: Lorenzo di Credi, Sacra Conversazione, detail, ante 1510-1512

**MUSEUM OF THE 20<sup>TH</sup> CENTURY AND THE  
CONTEMPORARY ART IN PALAZZO FABRONI**  
Via Sant'Andrea 18 - Tel 0573 371817  
fabroni.artivisive@comune.pistoia.it  
musei.comune.pistoia.it

**MARINO MARINI MUSEUM**  
Ex Convento del Tau  
Corso S. Fedi 30 - Tel 0573 30285  
www.fondazionemarinomarini.it  
**CHIESA DEL TAU**  
Corso S. Fedi 28 - Tel 0573 32204

**PALAZZO DE' ROSSI**  
Fondazione Pistoia Musei  
Via de' Rossi 26 - Tel 0573 974267  
info@pistoiamusei.it  
www.fondazionepistoiamusei.it

**PALAZZO BUONTALENTI**  
Fondazione Pistoia Musei  
Via de' Rossi 7 - Tel 0573 974267  
info@pistoiamusei.it  
www.fondazionepistoiamusei.it

**FERNANDO MELANI HOUSE-STUDIO**  
Corso Gramsci 159  
Visit by reservation  
musei.comune.pistoia.it

**SIGFRIDO BARTOLINI HOUSE-MUSEUM**  
Via di Bigiano 5  
Tel 0573 451311 / 328 8563276  
Visit by reservation  
sigfrido.bartolini@gmail.com  
www.sigfridobartolini.it

**VILLA CELLE**  
Via Montalese 7, loc. Santomato  
Tel 0573 479907  
info@goricoll.it  
www.goricoll.it

**JORIO VIVARELLI FOUNDATION**  
Via Felceti 11, loc. Arcigiano  
Tel 0573 477423  
Visit by reservation  
segreteria@fondazionevivarelli.it  
www.fondazionevivarelli.it

## CONTEMPORARY ART

**PALAZZO FABRONI  
MUSEUM OF 20<sup>TH</sup>-CENTURY  
AND CONTEMPORARY ART**  
The **Museum of 20<sup>th</sup>-Century  
and Contemporary Art**

exhibits the Municipality of  
Pistoia's permanent collection  
of modern and contemporary  
art, spanning the art scene  
from the 1920s to the present  
day. The museum has been  
organized chronologically and

into homogeneous groups  
of works, passing through  
Arte Povera, Conceptual Art,  
Minimal Art, and Visual Poetry  
with a complete renewal  
of language and materials.  
It begins with a section  
dedicated to 20<sup>th</sup>-Pistoiese  
century art from the second  
half of the 1920s to the  
late 1960s. The exhibition  
continues in the large central  
hall displaying Claudio  
Parmiggiani's work *Scultura  
d'ombra*, with monographic  
rooms dedicated to the  
Pistoiese artists Mario Nigro,  
Fernando Melani, Gualtiero  
Nativi, and Agenore Fabbri  
in addition to the collective  
rooms with works donated  
to the Municipality of  
Pistoia by the guest artists  
of temporary exhibitions  
organized periodically by the  
museum. Aurelio Amendola's  
photographic portraits  
of artists are located in  
the various sections. The  
museum's outdoor space is  
set up as a contemporary  
"author's garden".

MAP → 21

**MARINO MARINI MUSEUM**

The **Marino Marini  
Museum** is located in the  
monumental Tau complex.  
The church and the convent,  
which housed the order of  
St. Anthony Abbot, were  
built around the first half of  
the 1300s. Today they serve  
to frame Marino Marini's  
graphic, pictorial, and  
sculptural works.

The museum offers a  
fascinating tour that covers  
the entire convent building,  
exhibiting paintings,  
sculptures, drawings,  
watercolors, tempera, and  
mixed media, in addition to  
an important collection of  
plaster casts. The church  
houses some of Marino  
Marini's large bronzes, yet  
preserves the suggestive  
atmosphere created by  
the 14<sup>th</sup>-century frescoes  
adorning the chapel.  
Because of the quality  
and exclusivity of its  
collections, in addition to  
its wealth of bibliographic  
and photographic  
documentation, the  
museum is one of the most  
prestigious institutes in  
Europe dedicated to Marino  
Marini.

MAP → 7

Palazzo de' Rossi

**PALAZZO DE' ROSSI**

As a result of the 2018  
refurbishment of the  
ground-floor exhibition  
rooms, it is the home of the  
**Fondazione Pistoia Musei**,  
dedicated to 20<sup>th</sup>-century art  
in Pistoia and a model for  
learning about the various  
artistic generations that  
succeeded each other in the  
last century. The recently  
restored Palazzo de' Rossi  
is an impressive example of  
Tuscan architecture whose  
interior was decorated in  
the early 19<sup>th</sup>-century by the  
Pistoiese painters Valiani,  
Finì, and Bezzuoli.

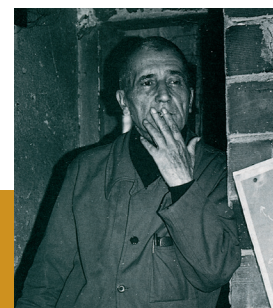
MAP → 47

**PALAZZO BUONTALENTI**

This palace has been set up  
as the headquarters of the  
**Fondazione Pistoia Musei**,  
dedicated to temporary  
exhibitions with a special  
focus on modern and  
contemporary art. Although  
also known in Pistoia as  
Palazzo Sozzifanti, the  
palace's name is attributable  
to the alleged involvement  
during its design phase  
of the famous Florentine  
Bernardo Buontalenti, the  
Grand Duke of Tuscany's  
preferred architect. It is also  
an interesting example of  
late 16<sup>th</sup>-century Florentine  
architecture.

MAP → 46

Ferdinando Melani



Sigfrido Bartolini house-museum



**FERNANDO MELANI  
HOUSE-STUDIO**

The **House-studio of  
Fernando Melani** (1907-  
1985) may be considered an  
excellent text for the study of  
contemporary art. Thus, it is  
also a natural summary to a  
visit to the Palazzo Fabroni  
museum. It is a special place  
for understanding this Pistoia  
artist's entire experience,  
as well as his exploratory  
journey through the key art  
movements in the second  
half of the 20<sup>th</sup> century, from  
Arte Povera to Conceptual  
and Minimal Art. The various  
rooms contain a great  
quantity of works that occupy  
the ceilings, walls, and floors,  
according to the arrangement  
that given by Melani upon  
their creation.

MAP → 37

**SIGFRIDO BARTOLINI  
HOUSE-MUSEUM**

The **House-museum** of the  
painter, engraver and writer  
**Sigfrido Bartolini** (1932-  
2007) houses plaster casts  
of *Venus de Milo* and *Cyrene*,  
the *Friezes of the Parthenon*,  
a collection of amphorae  
from all of Italy's regions,  
309 black-and-white and  
color woodcuts of the *Tale  
of Pinocchio*. The Quadreria,  
which adorns the walls of the  
house, is essentially a novel  
journey through the artist's  
works. However, it also offers  
works by such masters as  
Sironi, De Chirico, Soffici,  
Viani, Maccari, and Costetti.  
The rich library, a collection of  
20<sup>th</sup>-century magazines, the  
archives, and the collection of  
letters give a glimpse of the  
20<sup>th</sup>-century artistic culture  
in which Sigfrido Bartolini  
participated.

MAP → 44

left:  
Fernando  
Melani, *Bucato*;  
right: Sigfrido  
Bartolini,  
*Il Casone*, 1973



Alberto Burri,  
Grande Ferro Celle, 1985



**VILLA CELLE**

On the hills just outside the  
city in Santomato is the  
park of **Villa Celle**, home  
to a magnificent exemplar  
of environmental art. The  
collector Giuliano Gori invites  
each artist, a guest at the  
villa, to choose either an  
outdoors space, or another  
inside one of the historical  
buildings in the park. The  
artist then develops an  
idea with respect to the  
environment chosen.  
Thus, the work of art does  
not occupy a space, but  
becomes an integral part of  
the environment and of the  
landscape itself.



Michel Gerard,  
*Cellsmic*, 1990

Villa Stonorov



**MUSEUM OF THE JORIO  
VIVARELLI FOUNDATION**

The **Fondazione Jorio  
Vivarelli** is located just  
outside Pistoia, on the first  
of the hairpin turns that  
lead to Arcigiano. It was  
established in 2000. The  
works and the villa built  
by the master and his wife  
Giannetta were donated to  
the city of at the end of the  
1960s. The museum grew  
out of a design by Oskar  
Stonorov, one of the greatest  
exponents of rationalist  
architecture as well as a  
great lover of sculpture.  
Drawings, engravings,  
medals, and coins followed  
the sculptor's creative  
journey, ranging from the  
intimist works of his early  
years to his crucifixes that  
testify to the violence and  
humiliation suffered by  
those who, like him, were  
imprisoned in concentration  
camps; from the works for  
the public squares, conceived  
during a stay in America  
with Stonorov, up to his final  
period characterized by his  
New Man cycle.

MAP → 41

Jorio Vivarelli,  
*Inno alla vita*



**Pistoia e  
Montagna Pistoiese**

VISIT  
**Pistoia**  
www.visitpistoia.eu

PISTOIA  
IACOBEO  
2021/2022

# Museums

*Pistoia  
the museum is home*



visittuscany.com



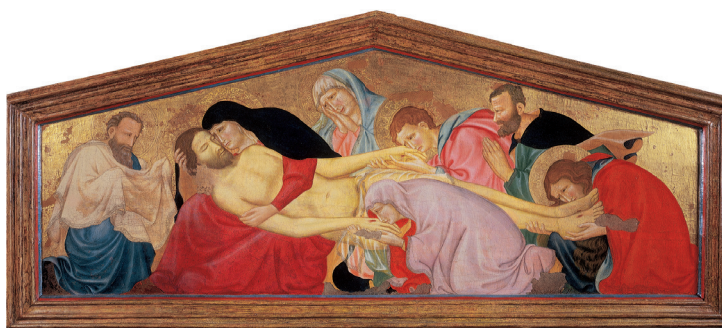
## ANCIENT ART

### CIVIC MUSEUM OF ANTIQUE ART IN PALAZZO COMUNALE

The town hall is the 14<sup>th</sup>-century Palazzo degli Anziani and home to the **Civic Museum of Antique Art**, the city's first and largest museum. Pistoia's entire history of art from the 13<sup>th</sup> to the 20<sup>th</sup> century is represented here, organized in chronological order with groupings of the Florentine and Pistoia schools. Among the prominent works are the *Altarpiece of St. Francis* by Coppo di Marcovaldo (13<sup>th</sup> century), the *Lamentation of Christ* by Lippo di Benivieni (14<sup>th</sup> century), and the great 16<sup>th</sup>-century altarpieces by Lorenzo di Credi and Bernardino Detti. The third and final floor of the building holds a fine selection of paintings of the Florentine 17<sup>th</sup> and 18<sup>th</sup> centuries and of 19<sup>th</sup>-century

romantic paintings, inspired by the liberal ideologies of Niccolò Puccini, the philanthropist and patron from Pistoia. The tour ends on the mezzanine where the museum's 20<sup>th</sup>-century section is located. Here, the **Giovanni Michelucci Documentation Center** (Pistoia 1891 - Florence 1990) can be found. The collection of over nine hundred drawings, sketches, and transparencies documents the entire graphic production of the well-known architect from Pistoia. It offers useful comparisons with models and photographic reproductions of his most important achievements. These include the Church of San Giovanni Battista or of the Autostrada, the Church of Longarone, the Cassa di Risparmio di Firenze, and the Monte dei Paschi headquarters in Colle Val d'Elsa. **MAP → 4**

Palazzo Comunale



Lippo di Benivieni, *Compianto di Cristo*, 14<sup>th</sup> century

### MUSEUM OF THE SPEDALE DEL CETTO

The **Museum of the Spedale del Cetto** is located in the historical-monumental part of the former hospital complex founded in 1277, according to tradition. The museum tour illustrates the historical, architectural, and artistic events surrounding the building, with a specific section dedicated to the Della Robbia Frieze in polychrome glazed terracotta, set on the external loggia - a masterpiece of Renaissance sculpture. In the former men's ward of San Jacopo, the museum has a large section on the history of healthcare in Pistoia, through specific studies of the rich historical collection of surgical instruments,



Spedale del Cetto



dating from the 18<sup>th</sup> century to the early decades of the 20<sup>th</sup> century. Two other sections are dedicated to the former psychiatric hospital at the Sbertoli Villas and to the Filippo Pacini Medical Academy. In the garden of the former hospital the visit to the museum is concluded with the small 18<sup>th</sup>-century *Anatomical Theater*, evidence of the medical-surgical school first active in the 17<sup>th</sup> century. **MAP → 8**



The Della Robbia Frieze, detail; below: *Anatomical Theater*

### ANCIENT PALACE OF THE BISHOPS

One of the **Fondazione Pistoia Musei**'s centerpieces, this palace is dedicated to ancient and modern art. Housed in the historical bishop's seat, the museums display a substantial part of the city of Pistoia's art. The tour opens with the **Tactile Museum** - Touching the City, with displays of tactile wooden models reproducing Pistoia's main architectural monuments can be taken apart. The same models, in bronze are found inside the monuments themselves. The **Archaeological Tour** offers the only visible evidence of the city's archaeological layers, from the Roman period up to the modern and contemporary age. The **Museum of the Cathedral of San Zeno** preserves a rich collection of sacred furnishings and liturgical vestments from the Cathedral of S. Zeno. In addition, important modern

Millefiori Tapestry, detail



works have also been found a home in the building: a *Pomona* by Marino Marini, dated 1945, and a painting cycle of dry-laid tempera by the painter **Giovanni Boldini** from Ferrara. The **Bigongiari Collection** has recently been established, with over forty paintings representing the most important private collection on the Florentine 17<sup>th</sup> century. The museum also houses the **Millefiori Tapestry**. Known as the *Adoration*, it is a splendid example of 16<sup>th</sup>-century Flemish tapestry weaving. **MAP → 3**

### SAN SALVATORE

During its recent restoration, the deconsecrated church of **San Salvatore**, was recently transformed into a museum/exhibition space. It is one of the **Fondazione Pistoia Musei** venues. This small yet invaluable museum tells the story of the oldest part of the city through new discoveries; a variety of visual, sound, and tactile languages; and digital interactions. The restoration and excavations have brought to light the remains of the most ancient parts of the church and of pre-existing Roman and early medieval structures. In addition, new light has been shed on the legend that Catiline was buried at the foot of the tabernacle found on the street. Clearly, the most extraordinary discovery has been an incomplete fresco with *Lamentation over the Dead Christ*, datable to the end of the 13<sup>th</sup> century and attributed to the circle of Lippo di Benivieni. **MAP → 25**

Antico Palazzo dei Vescovi



Palazzo Rospigliosi



### ROSPIGLIOSI MUSEUM

The **Clemente Rospigliosi Museum** is located on the main floor of the residence of this illustrious Pistoia family. Giulio Rospigliosi, Pope Clement IX (1667-1669) belonged to a branch of this family. The museum preserves practically intact the sumptuous 17<sup>th</sup>-century decor of the papal apartment, set up to properly host Clement IX when he passed through the city. Especially extraordinary is the 16<sup>th</sup>- and 17<sup>th</sup>-century picture gallery, including twenty-five works by the painter Giacinto Gimignani. With its large four-poster bed in red damask the pope's chamber is very charming. **MAP → 27**



Four-poster bed in red damask, 17<sup>th</sup> century

### DIOCESAN MUSEUM

The **Diocesan Museum** is housed in the monumental rooms adjoining the Rospigliosi apartment. It contains valuable objects of sacred art, mainly jewelry, which have come from the churches in the diocese. On display are silver objects, sacred vessels, paintings, statues, and liturgical vestments. They are arranged in chronological order, following formal transformations in the taste and style of these objects intended for sacred ceremonies. **MAP → 27**



Limoges, Crucifix, second half of the 13<sup>th</sup> century

French manufacture, Dress, early 19<sup>th</sup> century; below: Tuscan manufacture, Paliotto, detail, 1601



## TRADITIONS & CRAFTS

### EMBROIDERY MUSEUM

On the ground floor of Palazzo Rospigliosi is the **Embroidery Museum**, which exhibits ancient and more recent evidence of an art for which Pistoia is known all over the world. The museum presents artifacts related to domestic life characterized by whitework embroidery, household linens, and personal trousseaux. Another section contains precious ecclesiastical garments embroidered with polychrome silk, gold, and silver threads. **MAP → 27**



### LUIGI TRONCI FOUNDATION MUSEUM OF MUSIC AND PERCUSSION MUSICAL INSTRUMENTS

The collection of the **Fondazione Luigi Tronci** has over 800, mostly percussion musical instruments, sound sculptures, theatrical sound effects devices, organs, and a collection of historical documents. All the items in collection have been accumulated by Luigi Tronci, current president of UFIP, (Unione Fabbricanti Italiani Piatti), in Pistoia.



Museum of Music and Percussion Musical Instruments

The company is recognized worldwide for its production of handmade cymbals. The Tronci family played an important role in Pistoia's history vis-à-vis organ construction since the mid-18<sup>th</sup> century, which gave rise to the Pistoia organ school. **MAP → 43**